

sonata
Vesta

Adagio

Allegro

ria.

V. S. Volti presto.

A handwritten musical score consisting of ten staves. The notation includes various note values, rests, and clefs. The first staff begins with a treble clef and a key signature of one sharp (F#). The second staff begins with a bass clef. The third staff begins with a treble clef. The fourth staff begins with a bass clef. The fifth staff begins with a treble clef. The sixth staff begins with a bass clef. The seventh staff begins with a treble clef. The eighth staff begins with a treble clef and contains the dynamic marking *pia.* The ninth staff begins with a treble clef and contains the dynamic marking *for.* The tenth staff begins with a bass clef. The music is written in a fluid, handwritten style with some ink bleed-through and smudges.

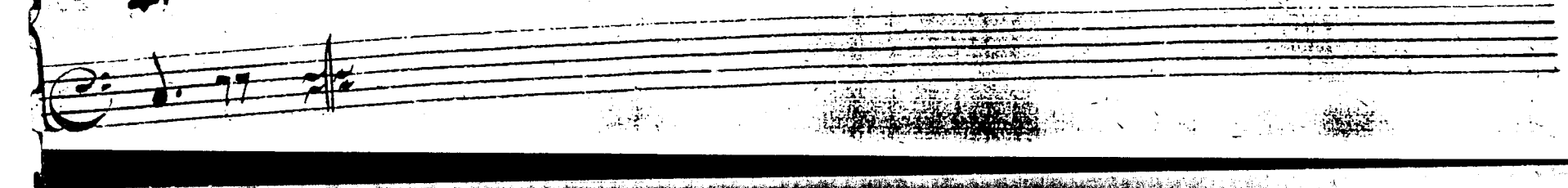
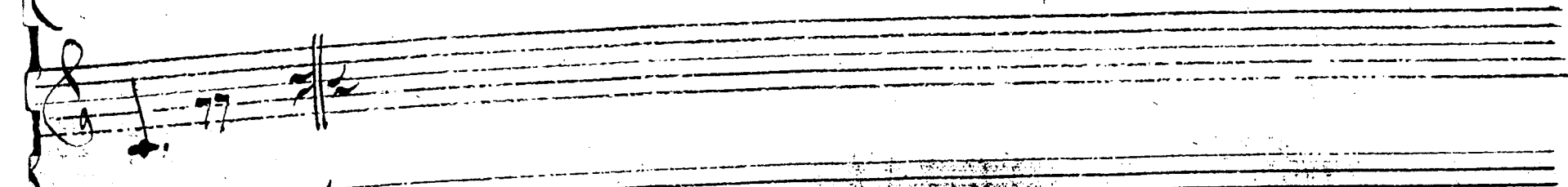
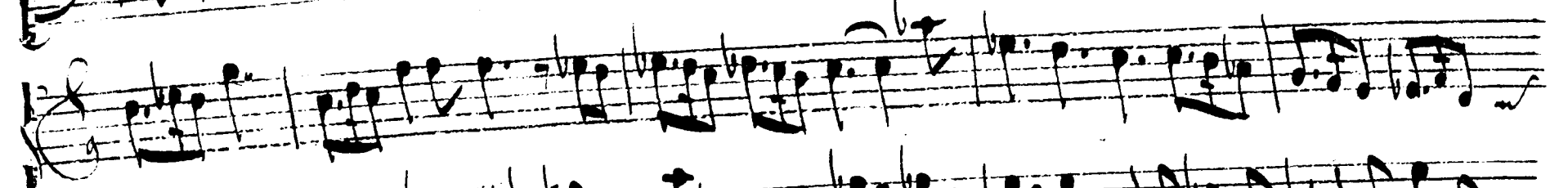
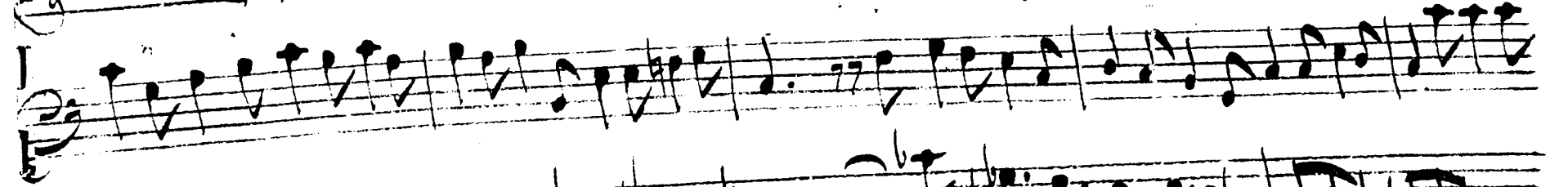
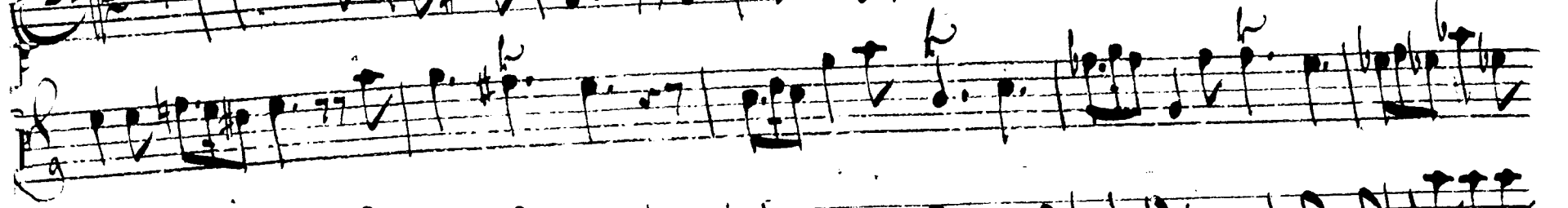
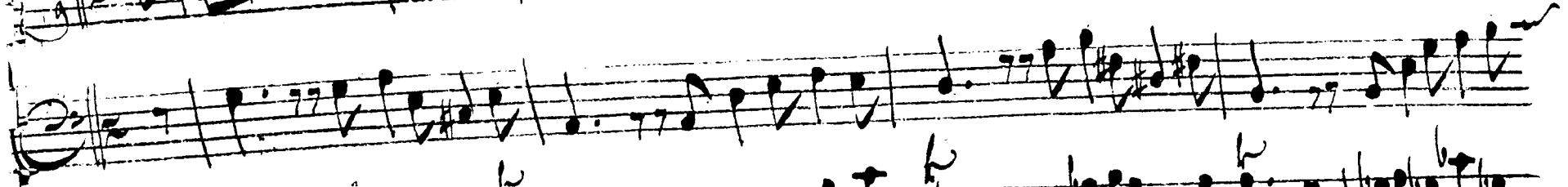
Siciliana

The first two staves of the handwritten musical score. The first staff begins with a treble clef, a 3/4 time signature, and a key signature of one sharp (F#). The music consists of a series of eighth and sixteenth notes, with some rests. The second staff continues the melody with similar rhythmic patterns.

The third and fourth staves of the handwritten musical score. The third staff continues the melody and includes dynamic markings 'p' (piano) and 'f' (forte). The fourth staff continues the piece with similar rhythmic patterns.

The fifth and sixth staves of the handwritten musical score. The fifth staff shows a change in key signature to two sharps (F# and C#). The sixth staff continues the piece with similar rhythmic patterns.

A. S. Voltij presto.



Allegro

Allegro molto presto

A page of handwritten musical notation consisting of ten staves. The notation is dense and includes various musical symbols such as clefs, notes, rests, and accidentals. The music is written in a cursive, handwritten style. The first staff begins with a treble clef and a key signature of one sharp (F#). The second staff begins with a bass clef. The third staff begins with a treble clef. The fourth staff begins with a bass clef. The fifth staff begins with a treble clef. The sixth staff begins with a bass clef. The seventh staff begins with a treble clef. The eighth staff begins with a bass clef. The ninth staff begins with a treble clef. The tenth staff begins with a bass clef. The music is written in a cursive, handwritten style. The paper shows signs of age and wear, with some dark smudges and a circular stamp at the bottom center.

pia

for:



Time